



S.S.G. PAREEK P.G. COLLEGE

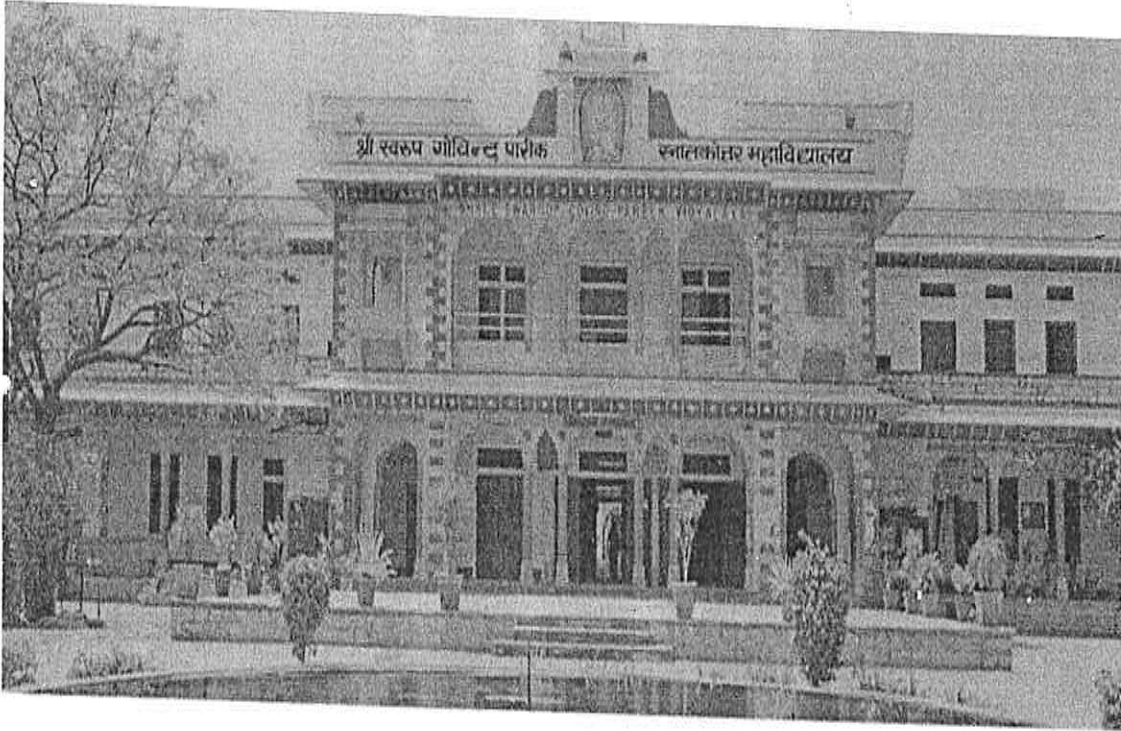


(Affiliated to the University of Rajasthan)

Est.-1906

UGC Approved "First Heritage College in Rajasthan"

INTERNAL AUDIT REPORT 2022-23





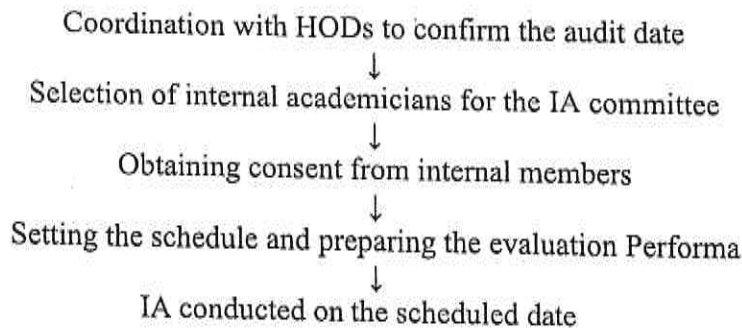
Internal Audit Report (IAR)

The primary goal of the audit is to thoroughly examine, assess, and appraise the performance across various domains including teaching-learning processes, research activities, extracurricular engagements, and administrative functions within the different departments of the college. Typically, this review is conducted by both internal committee members and external academic experts. As an integral part of the audit process, the Internal Quality Assurance Cell (IQAC) has developed a structured evaluation format, in accordance with the criteria outlined by the National Assessment and Accreditation Council (NAAC). The evaluation of different departments is conducted based on specific criteria, including:

- i. Course content
- ii. Teaching-learning methods
- iii. Examination and assessment procedures
- iv. Academic results
- v. Additional activities
- vi. Infrastructure
- vii. Departmental administration

Process Involved

The internal members' process for IA entails the following steps:





S.S.G. PAREEK P.G. COLLEGE



(Affiliated to the University of Rajasthan)

Est.-1906

UGC Approved "First Heritage College in Rajasthan"

Internal Audit Committee for the year 2022-23 consisting of the following members was constituted by the principal.

S.No.	Name of the Internal	Designation	College
1.	Dr. N. M. Sharma	Principal	SSG Pareek PG College, Jaipur
2.	Dr. Anju Pareek	IQAC Coordinator	SSG Pareek PG College, Jaipur
3.	Dr. Shweta Jaiman	HOD	SSG Pareek PG College, Jaipur
4.	Dr. Mahesh Bhimwal	HOD	SSG Pareek PG College, Jaipur
5.	Dr. Meghna Pareek	HOD	SSG Pareek PG College, Jaipur

The Committee convened a formal meeting on 01.03.2023 attended by the Principal, Coordinator and Heads of Department. During this meeting, the Principal provided an overview of the college, and the Committee was briefed on the audit's objectives and procedures.

Subsequently, the Committee conducted visits to various departments and inspected infrastructural facilities including classrooms and laboratories. Interactions were held with both teaching and technical staff to gauge academic and administrative performance. Upon completion of all inspection stages and staff interactions, the Committee compiled the Internal Audit Report encompassing assessments for all departments.

Kanti Chandra Road, Bani Park, Jaipur-302016 (Raj.) Visit Us: www.ssgpareekpgcollege.com
Tel. : 0141-2202167 Email : info@ssgpareekpgcollege.com

PRINCIPAL
S.S.G. PAREEK PG COLLEGE
JAIPUR (RAJASTHAN)



S.S.G. PAREEK P.G. COLLEGE



(Affiliated to the University of Rajasthan)

Est.-1906

UGC Approved "First Heritage College in Rajasthan"

Internal Audit Report

Name of the college: S.S.G. PG PAREEK COLLEGE, Jaipur

Audit Team-

1	Dr. N.M. Sharma
2	Dr. Anju Pareek
3	Dr. Shweta Jaiman
4	Dr. Mahesh Bhimwal
5	Dr. Meghna Pareek

Date of Audit:

	Observations	Remarks/Suggestions
College timing:	9:00AM - 3:00PM	

I. Curricular Aspects: -

1.	Program Offered	Strength	It is observed that Admission is Satisfactory in UG as well as PG Programmes.	Admission Team Committee should be more focus on counseling and advertisement.
	B.A.	540		
	B.Sc.	820		
	B.Com.	540		
	BBA	80		
	BCA	140		
	M.A.(Hindi)	40		
	M.A.(Political Science)	40		
	M.A.(Geography)	40		
	M.A. (History)	40		
	M.A. (Drawing & Painting)	12		
	M.A. (Music-Vocal)	10		
	M.A. (Public Administration)	20		
	M.Com. (EAFM)	40		
	M.Com. (BADM)	60		

Kanti Chandra Road, Bani Park, Jaipur-302016 (Raj.) Visit Us: www.ssgpareekpgcollege.com
Tel.: 0141-2202167 Email: info@ssgporeekpgcollege.com

PRINCIPAL
S.S.G. PAREEK PG COLLEGE
JAIPUR (RAJASTHAN)



S.S.G. PAREEK P.G. COLLEGE



(Affiliated to the University of Rajasthan)

Est.-1906

UGC Approved "First Heritage College in Rajasthan"

	M.Com.(ABST)	60		
	M.Sc. (PHYSICS)	60		
	M.Sc. (CHEMISTRY)	60		
	M.Sc. (MATHS)	80		
	M.Sc. (BOTANY)	40		
	M.Sc. (ZOOLOGY)	40		
2.	Add-On /Certificate courses		30	Good
3.	Annual curricular plan		Yes	Yes
4.	Attendance		82%	Yes
5.	Coverage of syllabus		100%	Yes

II. Teaching And learning-

1	Teaching Plan	All Teachers are prepared and classes are taken as per teaching plan	
2	Conduct of Classes	Timely classes are conducted in UG and PG	
3	Use of supplementary teaching tools and application of ICT	Yes	Smart-Board, PPT, Videography, White Board etc.
4	Student Centric Activities	Yes	
5	Teachers ICT Programme	Yes	
6	Remedial Classes	Yes	
7	Student Assignment	Yes	
8	Student Feedback (Analysis is done or not)	Yes	

📍 Kanti Chandra Road, Bani Park, Jaipur-302016 (Raj.) 🌐 Visit Us: www.ssgpareekpgcollege.com
 ☎ Tel. : 0141-2202167 ✉ Email : info@ssgpareekpgcollege.com

PRINCIPAL
S.S.G. PAREEK PG COLLEGE
JAIPUR (RAJASTHAN)



S.S.G. PAREEK P.G. COLLEGE



(Affiliated to the University of Rajasthan)

Est.-1906

UGC Approved "First Heritage College in Rajasthan"

III. Evaluation & Results

1	Conduct of Internal Examinations	Class test and Pre-university was conducted.	85 %
2	Maintenance of Marks register /File	Timely completed	Nil
3	Result of University Examinations (Last Exam)	75% students were passed in Session 2019-20	Nil

IV. Learning Resources

1	Library	One library partially Automated.
2	Labs	32
3	e-Class Rooms	17
4	Computer & Internet	550

V. Physical Activities

Indore Games - Chess, Table Tennis , Carom, Outdoor Games - Football, Badminton, Boxing, Volleyball, Kho-Kho, Marathon, Basketball, Badminton, Kabaddi	Yes
---	-----

Kanti Chandra Road, Bani Park, Jaipur-302016 (Raj.) Visit Us: www.ssgpareekpgcollege.com
Tel. : 0141-2202167 Email : info@ssgpareekpgcollege.com

PRINCIPAL
S.S.G. PAREEK PG COLLEGE
JAIPUR (RAJASTHAN)



S.S.G. PAREEK P.G. COLLEGE



(Affiliated to the University of Rajasthan)

Est.-1906

UGC Approved "First Heritage College in Rajasthan"

VI. Basic Facilities		
1.	Sanitation	Yes
2.	Drinking water Facilities	Yes
3.	Meeting Room	Yes
4.	Seminar Hall	Yes
5.	Auditorium	Yes
6.	Lift	Yes
7.	Girls Common Room	Yes
8.	Divyagian facilities	Yes
9.	Anti Ragging Cell	Yes
10.	Medical Room	Yes
11.	Canteen	Yes

AUDIT COMMENT:

Areas for improvement to facilitate ongoing quality enhancement and accreditation readiness.

PRINCIPAL
S.S.G. PAREEK PG COLLEGE

Dr. N.M. Sharma
Principal

Comprehensive enhancement of several aspects like teaching methodologies, administrative procedures etc.

Co-Ordinator
IQAC, S.S.G. Pareek PG College
Jaipur (Rajasthan)

Dr. Anju Pareek
IQAC coordinator

Institute should robust academic infrastructure.

Dr. Mezha Pareek
H.O.D.

Kanti Chandra Road, Bani Park, Jaipur-302016 (Raj.) Visit Us: www.ssgpareekpgcollege.com
Tel.: 0141-2202167 Email: info@ssgpareekpgcollege.com

PRINCIPAL
S.S.G. PAREEK PG COLLEGE
JAIPUR (RAJASTHAN)



S.S.G. PAREEK P.G. COLLEGE

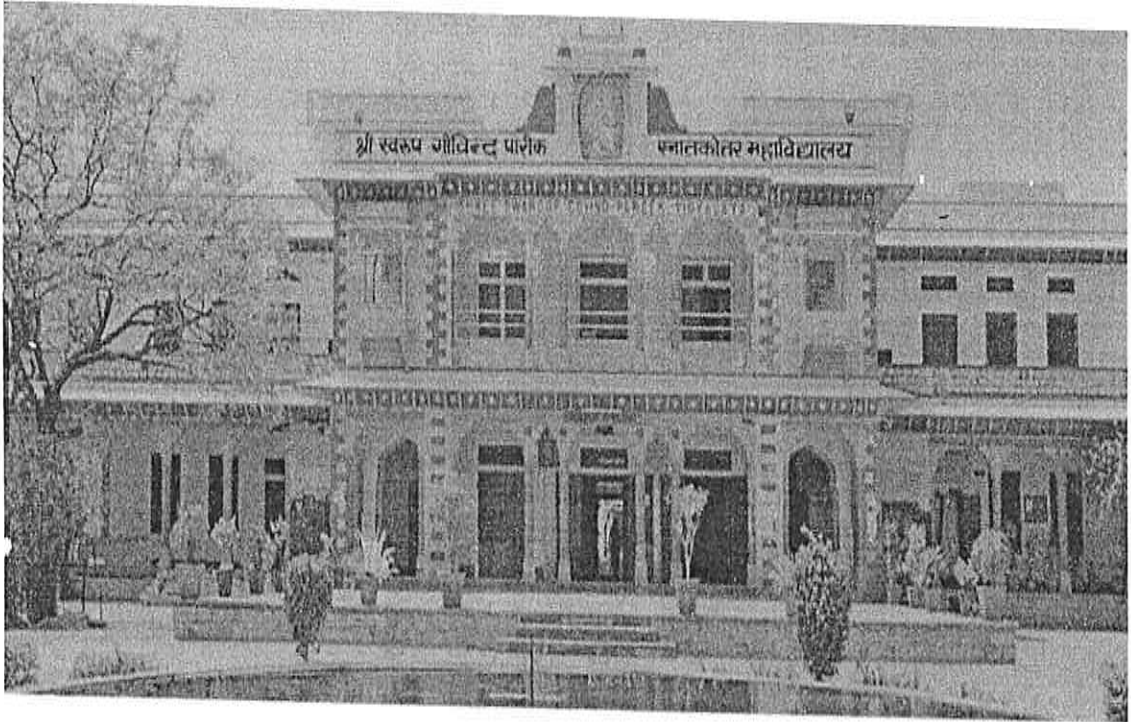


(Affiliated to the University of Rajasthan)

Est.-1906

UGC Approved "First Heritage College in Rajasthan"

INTERNAL AUDIT REPORT 2021-2022





S.S.G. PAREEK P.G. COLLEGE



(Affiliated to the University of Rajasthan)

Est.-1906

UGC Approved "First Heritage College in Rajasthan"

OUR VISION

- To provide education par excellence and make it accessible to all strata of society.
- To produce leaders and not just followers by instilling prudent, ingenious, righteous thinking.
- To promote gender, class, caste, creed, and religious equality.
- To bring about a radical change in society by empowering the spirit of entrepreneurship and innovation in the students.

OUR MISSION

- To demonstrate a perfect synergy between tradition, and modernity, scientific rationality and didactic wisdom
- To inculcate the spirit of inquiry, professional sagacity, and deftness in the students
- To provide the students with the requisite skill set to survive, sustain, and succeed in cutting- edge competition
- To catapult the careers of students, propelling them to the pinnacle of diverse professional spheres.
- To produce socially responsible global citizens, imbued with rich cultural ethos and ethical values.

Kanti Chandra Road, Bani Park, Jaipur-302016 (Raj.) Visit Us: www.ssgpareekpgcollege.com
Tel. : 0141-2202167 Email : info@ssgpareekpgcollege.com

PRINCIPAL
S.S.G. PAREEK PG COLLEGE
JAIPUR (RAJASTHAN)



S.S.G. PAREEK P.G. COLLEGE



(Affiliated to the University of Rajasthan)

Est.-1906

UGC Approved "First Heritage College in Rajasthan"

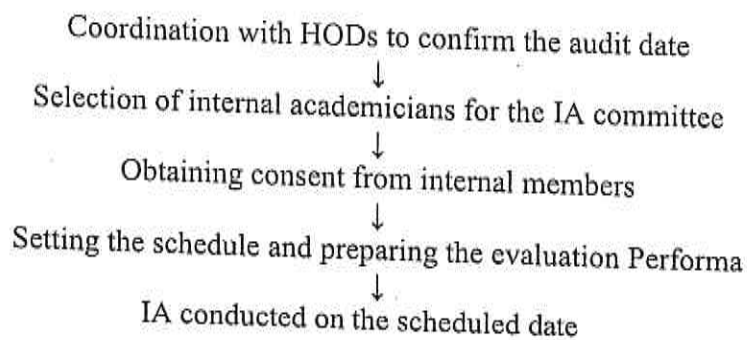
Internal Audit Report (IAR)

The primary goal of the audit is to thoroughly examine, assess, and appraise the performance across various domains including teaching-learning processes, research activities, extracurricular engagements, and administrative functions within the different departments of the college. Typically, this review is conducted by both internal committee members and external academic experts. As an integral part of the audit process, the Internal Quality Assurance Cell (IQAC) has developed a structured evaluation format, in accordance with the criteria outlined by the National Assessment and Accreditation Council (NAAC). The evaluation of different departments is conducted based on specific criteria, including:

- i. Course content
- ii. Teaching-learning methods
- iii. Examination and assessment procedures
- iv. Academic results
- v. Additional activities
- vi. Infrastructure
- vii. Departmental administration

Process Involved

The internal members' process for IA entails the following steps:



📍 Kanti Chandra Road, Bani Park, Jaipur-302016 (Raj.) 🌐 Visit Us: www.ssgpareekpgcollege.com
☎ Tel.: 0141-2202167 ✉ Email: info@ssgpareekpgcollege.com

PRINCIPAL
S.S.G. PAREEK PG COLLEGE
JAIPUR (RAJASTHAN)



S.S.G. PAREEK P.G. COLLEGE



(Affiliated to the University of Rajasthan)

Est.-1906

UGC Approved "First Heritage College in Rajasthan"

Internal Audit Committee for the year 2021-22 consisting of the following members was constituted by the principal.

S.No.	Name of the Internal	Designation	College
1.	Dr. N. M. Sharma	Principal	SSG Pareek PG College, Jaipur
2.	Dr. Anju Pareek	IQAC Coordinator	SSG Pareek PG College, Jaipur
3.	Dr. Mahesh Bhimwal	HOD	SSG Pareek PG -College, Jaipur
4.	Mr. Manoj Kumar Sharma	HOD	SSG Pareek PG College, Jaipur
5.	Dr. Meghna Pareek	HOD	SSG Pareek PG College, Jaipur

The Committee convened a formal meeting on March 2.03.2022, attended by the Principal, Coordinator and Heads of Department. During this meeting, the Principal provided an overview of the college, and the Committee was briefed on the audit's objectives and procedures.

Subsequently, the Committee conducted visits to various departments and inspected infrastructural facilities including classrooms and laboratories. Interactions were held with both teaching and technical staff to gauge academic and administrative performance. Upon completion of all inspection stages and staff interactions, the Committee compiled the Internal Audit Report encompassing assessments for all departments.

📍 Kanti Chandra Road, Bani Park, Jaipur-302016 (Raj.) 🌐 Visit Us: www.ssgpareekpgcollege.com
☎ Tel.: 0141-2202167 ✉ Email: info@ssgpareekpgcollege.com

PRINCIPAL
S.S.G. PAREEK PG COLLEGE
JAIPUR (RAJASTHAN)



S.S.G. PAREEK P.G. COLLEGE



(Affiliated to the University of Rajasthan)

Est.-1906

UGC Approved "First Heritage College in Rajasthan"

Internal Audit Report				
Name of the college: S.S.G. PG PAREEK COLLEGE, Jaipur				
Audit Team-				
1	Dr. N.M. Sharma			
2	Dr. Anju Pareek			
3	Dr. Mahesh Bhimwal			
4	Mr. Manoj Kumar Sharma			
5	Dr. Meghna Pareek			
Date of Audit:				
College timing:		Observations	Remarks/Suggestions	
		9:00AM - 3:00PM		
I. Curricular Aspects: -				
1.	Program Offered	Strength	It is observed that Admission is Satisfactory in UG as well as PG Programmes	Admission Team Committee should be more focus on counseling and advertisement.
	B.A.	540		
	B.Sc.	820		
	B.Com.	540		
	BBA	80		
	BCA	140		
	M.A.(Hindi)	40		
	M.A.(Political Science)	40		
	M.A.(Geography)	40		
	M.A. (History)	40		
	M.A. (Drawing & Painting)	12		
	M.A. (Music-Vocal)	10		
	M.A. (Public Administration)	20		
	M.Com. (EAFM)	40		
	M.Com. (BADM)	60		

Kanti Chandra Road, Bani Park, Jaipur-302016 (Raj.) Visit Us: www.ssgpareekpgcollege.com
Tel.: 0141-2202167 Email: info@ssgpareekpgcollege.com

PRINCIPAL
S.S.G. PAREEK PG COLLEGE
JAIPUR (RAJASTHAN)



S.S.G. PAREEK P.G. COLLEGE



(Affiliated to the University of Rajasthan)

Est.-1906

UGC Approved "First Heritage College in Rajasthan"

	M.Com.(ABST)	60		
	M.Sc. (PHYSICS)	60		
	M.Sc. (CHEMISTRY)	60		
	M.Sc. (MATHS)	80		
	M.Sc. (BOTANY)	40		
	M.Sc. (ZOOLOGY)	40		
2.	Add-On /Certificate courses		30	Good
3.	Annual curricular plan		Yes	Yes
4.	Attendance		79%	Yes
5.	Coverage of syllabus		100%	Yes

II. Teaching And learning-

1	Teaching Plan	All Teachers are prepared and classes are taken as per teaching plan	All Faculty Members and Staff should follow government guidelines regarding COVID 19
2	Conduct of Classes	Timely classes are conducted in UG and PG	
3	Use of supplementary teaching tools and application of ICT	Yes	Smart-Board, PPT, Videography, White Board etc.
4	Student Centric Activities	Yes	
5	Teachers ICT Programme	Yes	
6	Remedial Classes	Yes	
7	Student Assignment	Yes	
8	Student Feedback (Analysis is done or not)	Yes	

📍 Kanti Chandra Road, Bani Park, Jaipur-302016 (Raj.) 🌐 Visit Us: www.ssgpareekpgcollege.com
 ☎ Tel.: 0141-2202167 ✉ Email : info@ssgpareekpgcollege.com

PRINCIPAL
S.S.G. PAREEK PG COLLEGE
JAIPUR (RAJASTHAN)



S.S.G. PAREEK P.G. COLLEGE



(Affiliated to the University of Rajasthan)

Est.-1906

UGC Approved "First Heritage College in Rajasthan"

III. Evaluation & Results

1	Conduct of Internal Examinations	Class test and Pre-university was conducted.	85 %
2	Maintenance of Marks register /File	Timely completed	Nil
3	Result of University Examinations (Last Exam)	70% students were passed in Session 2017-18	Nil

IV. Learning Resources

1	Library	One library partially Automated.
2	Labs	32
3	E-Class Rooms	17
4	Computer & Internet	550

V. Physical Activities

Indore Games - Chess, Table Tennis , Carom, Outdoor Games - Football, Badminton, Boxing, Volleyball, Kho-Kho, Marathon, Basketball, Badminton, Kabaddi	Yes
---	-----

Kanti Chandra Road, Bani Park, Jaipur-302016 (Raj.) Visit Us: www.ssgpareekpgcollege.com
Tel. : 0141-2202167 Email : info@ssgpareekpgcollege.com

PRINCIPAL
S.S.G. PAREEK PG COLLEGE
JAIPUR (RAJASTHAN)



S.S.G. PAREEK P.G. COLLEGE



(Affiliated to the University of Rajasthan)

Est.-1906

UGC Approved "First Heritage College in Rajasthan"

VI. Basic Facilities		
1.	Sanitation	Yes
2.	Drinking water Facilities	Yes
3.	Meeting Room	Yes
4.	Seminar Hall	Yes
5.	Auditorium	Yes
6.	Lift	Yes
7.	Girls Common Room	Yes
8.	Divyagian facilities	Yes
9.	Anti Ragging Cell	Yes
10.	Medical Room	Yes
11.	Canteen	Yes

AUDIT COMMENT:

Encompasses a thorough evaluation of various operational areas, ensuring a holistic review.

PRINCIPAL
S.S.G. PAREEK PG COLLEGE
JAIPUR (RAJASTHAN)
Dr. N.M. Sharma
Principal

Analyse student feedback on timely.

Co-Ordinator
IQAC, S.S.G. Pareek PG College
Jaipur (Rajasthan)
Dr. Annu Pareek
IQAC coordinator

Identify the specific areas of corrective action for better performance

Dr. Mahesh
Bhunia
HOD

Kanti Chandra Road, Bani Park, Jaipur-302016 (Raj.) Visit Us: www.ssgpareekpgcollege.com
Tel.: 0141-2202167 Email: info@ssgpareekpgcollege.com

PRINCIPAL
S.S.G. PAREEK PG COLLEGE
JAIPUR (RAJASTHAN)



S.S.G. PAREEK P.G. COLLEGE



(Affiliated to the University of Rajasthan)

Est.-1906

UGC Approved "First Heritage College in Rajasthan"

INTERNAL AUDIT REPORT 2019-2020





S.S.G. PAREEK P.G. COLLEGE



(Affiliated to the University of Rajasthan)

Est.-1906

UGC Approved "First Heritage College in Rajasthan"

OUR VISION

- To provide education par excellence and make it accessible to all strata of society.
- To produce leaders and not just followers by instilling prudent, ingenious, righteous thinking.
- To promote gender, class, caste, creed, and religious equality.
- To bring about a radical change in society by empowering the spirit of entrepreneurship and innovation in the students.

OUR MISSION

- To demonstrate a perfect synergy between tradition, and modernity; scientific rationality and didactic wisdom
- To inculcate the spirit of inquiry, professional sagacity, and deftness in the students
- To provide the students with the requisite skill set to survive, sustain, and succeed in cutting- edge competition
- To catapult the careers of students, propelling them to the pinnacle of diverse professional spheres.
- To produce socially responsible global citizens, imbued with rich cultural ethos and ethical values.

📍 Kanti Chandra Road, Bani Park, Jaipur-302016 (Raj.) 🌐 Visit Us: www.ssgpareekpgcollege.com
☎ Tel. : 0141-2202167 ✉ Email : info@ssgpareekpgcollege.com

PRINCIPAL
S.S.G. PAREEK PG COLLEGE
JAIPUR (RAJASTHAN)



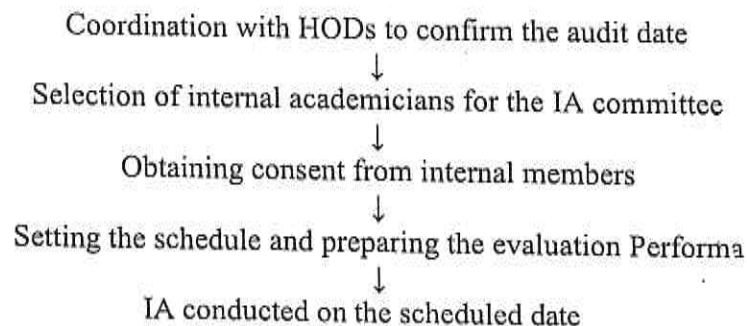
Internal Audit Report (IAR)

The primary goal of the audit is to thoroughly examine, assess, and appraise the performance across various domains including teaching-learning processes, research activities, extracurricular engagements, and administrative functions within the different departments of the college. Typically, this review is conducted by both internal committee members and external academic experts. As an integral part of the audit process, the Internal Quality Assurance Cell (IQAC) has developed a structured evaluation format, in accordance with the criteria outlined by the National Assessment and Accreditation Council (NAAC). The evaluation of different departments is conducted based on specific criteria, including:

- i. Course content
- ii. Teaching-learning methods
- iii. Examination and assessment procedures
- iv. Academic results
- v. Additional activities
- vi. Infrastructure
- vii. Departmental administration

Process Involved

The internal members' process for IA entails the following steps:





S.S.G. PAREEK P.G. COLLEGE



(Affiliated to the University of Rajasthan)

Est.-1906

UGC Approved "First Heritage College in Rajasthan"

Internal Audit Committee for the year 2019-20 consisting of the following members was constituted by the principal.

S.No.	Name of the Internal	Designation	College
1.	Dr. N. M. Sharma	Principal	SSG Pareek PG College, Jaipur
2.	Dr. Anju Pareek	IQAC Coordinator	SSG Pareek PG College, Jaipur
3.	Dr. Meghna Pareek	HOD	SSG Pareek PG College, Jaipur
4.	Mrs. Gixy Joon	HOD	SSG Pareek PG College, Jaipur
5.	Dr. Mahesh Bhimwal	HOD	SSG Pareek PG College, Jaipur

The Committee convened a formal meeting on 05.03.2020, attended by the Principal, Coordinator and Heads of Department. During this meeting, the Principal provided an overview of the college, and the Committee was briefed on the audit's objectives and procedures.

Subsequently, the Committee conducted visits to various departments and inspected infrastructural facilities including classrooms and laboratories. Interactions were held with both teaching and technical staff to gauge academic and administrative performance. Upon completion of all inspection stages and staff interactions, the Committee compiled the Internal Audit Report encompassing assessments for all departments.

📍 Kanti Chandra Road, Bani Park, Jaipur-302016 (Raj.) 🌐 Visit Us: www.ssgpareekpgcollege.com
☎ Tel.: 0141-2202167 ✉ Email: info@ssgpareekpgcollege.com

PRINCIPAL
S.S.G. PAREEK PG COLLEGE
JAIPUR (RAJASTHAN)



S.S.G. PAREEK P.G. COLLEGE



(Affiliated to the University of Rajasthan)

Est.-1906

UGC Approved "First Heritage College in Rajasthan"

Internal Audit Report				
Name of the college: S.S.G. PG PAREEK COLLEGE, Jaipur				
Aud.: Team-				
1	Dr. N.M. Sharma			
2	Dr. Anju Pareek			
3	Dr. Meghna Pareek			
4	Mrs. Gixy Joon			
5	Dr. Mahesh Bhimwal			
Date of Audit:				
			Observations	Remarks/Suggestions
College timing:			9:00AM - 3:00PM	
I. Curricular Aspects: -				
1.	Program Offered	Strength	It is observed that Admission is Satisfactory in UG as well as PG Programmes	Admission Team Committee should be more focus on counseling and advertisement.
	B.A.	540		
	B.Sc.	820		
	B.Com.	540		
	BBA	80		
	BCA	140		
	M.A.(Hindi)	40		
	M.A.(Political Science)	40		
	M.A.(Geography)	40		
	M.A. (History)	40		
	M.A. (Drawing & Painting)	12		
	M.A. (Music-Vocal)	10		
	M.A. (Public Administration)	20		
	M.Com. (EAFM)	40		
	M.Com. (BADM)	60		

Kanti Chandra Road, Bani Park, Jaipur-302016 (Raj.)
 Visit Us: www.ssgpareekpgcollege.com
 Tel.: 0141-2202167 Email : info@ssgporeekpgcollege.com

PRINCIPAL
S.S.G. PAREEK PG COLLEGE
JAI PUR (RAJASTHAN)



S.S.G. PAREEK P.G. COLLEGE



(Affiliated to the University of Rajasthan)

Est.-1906

UGC Approved "First Heritage College in Rajasthan"

	M.Com.(ABST)	60		
	M.Sc. (PHYSICS)	60		
	M.Sc. (CHEMISTRY)	60		
	M.Sc. (MATHS)	80		
	M.Sc. (BOTANY)	40		
	M.Sc. (ZOOLOGY)	40		
2.	Add-On /Certificate courses			Good
3.	Annual curricular plan		Yes	Yes
4.	Attendance		84%	Yes
5.	Coverage of syllabus		100%	- Yes

II. Teaching And learning-

1	Teaching Plan	All Teachers are prepared and classes are taken as per teaching plan	
2	Conduct of Classes	Timely classes are conducted in UG and PG	
3	Use of supplementary teaching tools and application of ICT	Yes	Smart-Board, PPT, Videography, White Board etc.
4	Student Centric Activities	Yes	
5	Teachers ICT Programme	Yes	
6	Remedial Classes	Yes	
7	Student Assignment	Yes	
8	Student Feedback (Analysis is done or not)	Yes	

📍 Kanti Chandra Road, Bani Park, Jaipur-302016 (Raj.) 🌐 Visit Us: www.ssgpareekpgcollege.com
 ☎ Tel. : 0141-2202167 ✉ Email : info@ssgporeekpgcollege.com

PRINCIPAL
S.S.G. PAREEK PG COLLEGE
JAI PUR (RAJASTHAN)



S.S.G. PAREEK P.G. COLLEGE



(Affiliated to the University of Rajasthan)

Est.-1906

UGC Approved "First Heritage College in Rajasthan"

III. Evaluation & Results

1	Conduct of Internal Examinations	Class test and Pre-university was conducted.	85 %
2	Maintenance of Marks register /File	Timely completed	Nil
3	Result of University Examinations (Last Exam)	70% students were passed in Session 2021-22	Nil


IV. Learning Resources

1	Library	One library partially Automated.
2	Labs	32
3	e-Class Rooms	17
4	Computer & Internet	550

V. Physical Activities

Indore Games - Chess, Table Tennis , Carom, Outdoor Games - Football, Badminton, Boxing, Volleyball, Kho-Kho, Marathon, Basketball, Badminton, Kabaddi	Yes
---	-----

📍 Kanti Chandra Road, Bani Park, Jaipur-302016 (Raj.) 🌐 Visit Us: www.ssgpareekpgcollege.com
☎ Tel.: 0141-2202167 ✉ Email : info@ssgpareekpgcollege.com


PRINCIPAL
S.S.G. PAREEK PG COLLEGE
JAIPUR (RAJASTHAN)



S.S.G. PAREEK P.G. COLLEGE



(Affiliated to the University of Rajasthan)

Est.-1906

UGC Approved "First Heritage College in Rajasthan"

VI. Basic Facilities		
1.	Sanitation	Yes
2.	Drinking water Facilities	Yes
3.	Meeting Room	Yes
4.	Seminar Hall	Yes
5.	Auditorium	Yes
6.	Lift	Yes
7.	Girls Common Room	Yes
8.	Divyagian Facilities	Yes
9.	Anti Ragging Cell	Yes
10.	Medical Room	Yes
11.	Canteen	Yes

AUDIT COMMENT:

Department should endeavor to increase the scope of collaborative learning.

PRINCIPAL
S.S.G. PAREEK PG COLLEGE
JAIPUR (RAJASTHAN)
Dr. N. M. Sharma
Principal

Comprehensive departmental inspections should be conducted on time.

Co-Ordinator
IQAC, S.S.G. Pareek PG College
Jaipur (Rajasthan)

Identifying opportunities for enhancement and guiding strategic decisions to further elevate the college standards.

Mrs. Guxy Joon
(HOD)

📍 Kanti Chandra Road, Bani Park, Jaipur-302016 (Raj.) 🌐 Visit Us: www.ssgpareekpgcollege.com
☎ Tel.: 0141-2202167 ✉ Email: info@ssgpareekpgcollege.com

PRINCIPAL
S.S.G. PAREEK PG COLLEGE
JAIPUR (RAJASTHAN)



S.S.G. PAREEK P.G. COLLEGE

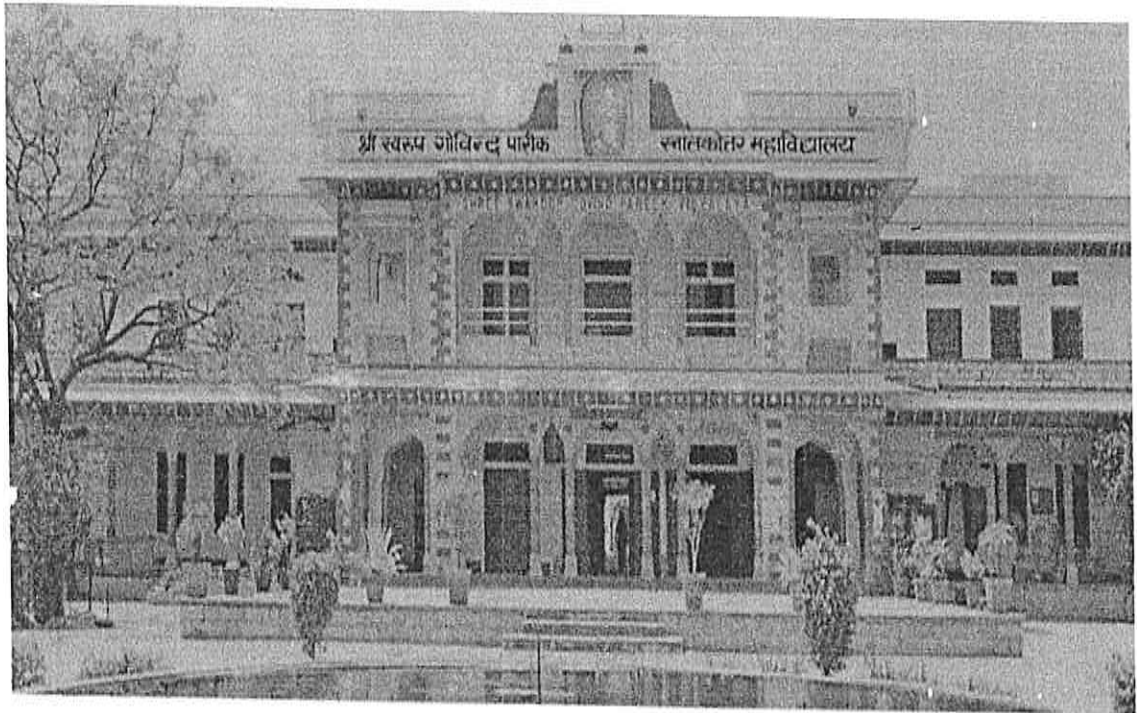


(Affiliated to the University of Rajasthan)

Est.-1906

UGC Approved "First Heritage College in Rajasthan"

INTERNAL AUDIT REPORT 2018-19





S.S.G. PAREEK P.G. COLLEGE



(Affiliated to the University of Rajasthan)

Est.-1906

UGC Approved "First Heritage College in Rajasthan"

OUR VISION

- To provide education par excellence and make it accessible to all strata of society.
- To produce leaders and not just followers by instilling prudent, ingenious, righteous thinking.
- To promote gender, class, caste, creed, and religious equality.
- To bring about a radical change in society by empowering the spirit of entrepreneurship and innovation in the students.

OUR MISSION

- To demonstrate a perfect synergy between tradition, and modernity; scientific rationality and didactic wisdom
- To inculcate the spirit of inquiry, professional sagacity, and deftness in the students
- To provide the students with the requisite skill set to survive, sustain, and succeed in cutting- edge competition
- To catapult the careers of students, propelling them to the pinnacle of diverse professional spheres.
- To produce socially responsible global citizens, imbued with rich cultural ethos and ethical values.

📍 Kanti Chandra Road, Bani Park, Jaipur-302016 (Raj.) 🌐 Visit Us: www.ssgpareekpgcollege.com
☎ Tel.: 0141-2202167 ✉ Email : info@ssgpareekpgcollege.com

PRINCIPAL
S.S.G. PAREEK PG COLLEGE
JAIPUR (RAJASTHAN)



S.S.G. PAREEK P.G. COLLEGE



(Affiliated to the University of Rajasthan)

Est.-1906

UGC Approved "First Heritage College in Rajasthan"

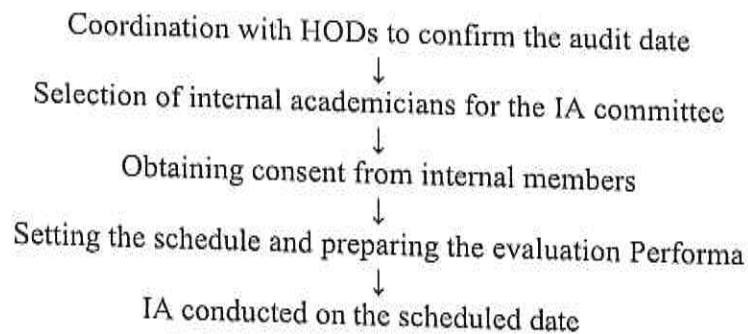
Internal Audit Report (IAR)

The primary goal of the audit is to thoroughly examine, assess, and appraise the performance across various domains including teaching-learning processes, research activities, extracurricular engagements, and administrative functions within the different departments of the college. Typically, this review is conducted by both internal committee members and external academic experts. As an integral part of the audit process, the Internal Quality Assurance Cell (IQAC) has developed a structured evaluation format, in accordance with the criteria outlined by the National Assessment and Accreditation Council (NAAC). The evaluation of different departments is conducted based on specific criteria, including:

- i. Course content
- ii. Teaching-learning methods
- iii. Examination and assessment procedures
- iv. Academic results
- v. Additional activities
- vi. Infrastructure
- vii. Departmental administration

Process Involved

The internal members' process for IA entails the following steps:



📍 Kanti Chandra Road, Bani Park, Jaipur-302016 (Raj.) 🌐 Visit Us: www.ssgpareekpgcollege.com
☎ Tel.: 0141-2202167 ✉ Email: info@ssgporeekpgcollege.com

PRINCIPAL
S.S.G. PAREEK PG COLLEGE
JAIPUR (RAJASTHAN)



S.S.G. PAREEK P.G. COLLEGE



(Affiliated to the University of Rajasthan)

Est.-1906

UGC Approved "First Heritage College in Rajasthan"

Internal Audit Committee for the year 2018-19 consisting of the following members was constituted by the principal.

S.No.	Name of the Internal	Designation	College
1.	Dr. N. M. Sharma	Principal	SSG Pareek PG College, Jaipur
2.	Dr. Anju Pareek	IQAC Coordinator	SSG Pareek PG College, Jaipur
3.	Dr. Meghna Pareek	HOD	SSG Pareek PG College, Jaipur
4.	Dr. K. K. Sharma	HOD	SSG Pareek PG College, Jaipur
5.	Dr. Mahesh Bhimwal	HOD	SSG Pareek PG College, Jaipur

The Committee convened a formal meeting on March 28, 2019, attended by the Principal, Coordinator and Heads of Department. During this meeting, the Principal provided an overview of the college, and the Committee was briefed on the audit's objectives and procedures.

Subsequently, the Committee conducted visits to various departments and inspected infrastructural facilities including classrooms and laboratories. Interactions were held with both teaching and technical staff to gauge academic and administrative performance. Upon completion of all inspection stages and staff interactions, the Committee compiled the Internal Audit Report encompassing assessments for all departments.

Location: Kanti Chandra Road, Bani Park, Jaipur-302016 (Raj.) Visit Us: www.ssgpareekpgcollege.com
Tel.: 0141-2202167 Email: info@ssgpareekpgcollege.com

PRINCIPAL
S.S.G. PAREEK PG COLLEGE
JAIPUR (RAJASTHAN)



S.S.G. PAREEK P.G. COLLEGE



(Affiliated to the University of Rajasthan)

Est.-1906

UGC Approved "First Heritage College in Rajasthan"

Internal Audit Report			
Name of the college: S.S.G. PG PAREEK COLLEGE, Jaipur			
Audit Team-			
1	Dr. N.M. Sharma		
2	Dr. Anju Pareek		
3	Dr. Meghna Pareek		
4	Dr. K.K. Pareek		
5	Dr. Mahesh Bhimwal		
Date of Audit:			
College timing:		Observations	Remarks/Suggestions
		9:00AM - 3:00PM	
I. Curricular Aspects: -			
1.	Program Offered	Strength	It is observed that Admission is Satisfactory in UG as well as PG Programmes. Admission Team Committee should be more focus on counseling and advertisement.
	B.A.	540	
	B.Sc.	820	
	B.Com.	540	
	BBA	80	
	BCA	140	
	M.A.(Hindi)	40	
	M.A.(Political Science)	40	
	M.A.(Geography)	40	
	M.A. (History)	40	
	M.A. (Drawing & Painting)	12	
	M.A. (Music-Vocal)	10	
	M.A. (Public Administration)	20	
	M.Com. (EAFM)	40	
	M.Com. (BADM)	60	

Kanti Chandra Road, Bani Park, Jaipur-302016 (Raj.) Visit Us: www.ssgpareekpgcollege.com
Tel.: 0141-2202167 Email: info@ssgporeekpgcollege.com

PRINCIPAL
S.S.G. PAREEK PG COLLEGE
JAIPUR (RAJASTHAN)



S.S.G. PAREEK P.G. COLLEGE



(Affiliated to the University of Rajasthan)

Est.-1906

UGC Approved "First Heritage College in Rajasthan"

	M.Com.(ABST)	60		
	M.Sc. (PHYSICS)	60		
	M.Sc. (CHEMISTRY)	60		
	M.Sc. (MATHS)	80		
	M.Sc. (BOTANY)	40		
	M.Sc. (ZOOLOGY)	40		
2.	Add-On /Certificate courses			Good
3.	Annual curricular plan		Yes	Yes
4.	Attendance		83%	Yes
5.	Coverage of syllabus		100%	Yes

II. Teaching And learning-			
1	Teaching Plan	All Teachers are prepared and classes are taken as per teaching plan	
2	Conduct of Classes	Timely classes are conducted in UG and PG	
3	Use of supplementary teaching tools and application of ICT	Yes	Smart-Board, PPT, Videography, White Board etc.
4	Student Centric Activities	Yes	
5	Teachers ICT Programme	Yes	
6	Remedial Classes	Yes	
7	Student Assignment	Yes	
8	Student Feedback (Analysis is done or not)	Yes	

📍 Kanti Chandra Road, Bani Park, Jaipur-302016 (Raj.) 🌐 Visit Us: www.ssgpareekpgcollege.com
 ☎ Tel.: 0141-2202167 ✉ Email : info@ssgpareekpgcollege.com

PRINCIPAL
S.S.G. PAREEK PG COLLEGE
JAIPUR (RAJASTHAN)



S.S.G. PAREEK P.G. COLLEGE



(Affiliated to the University of Rajasthan)

Est.-1906

UGC Approved "First Heritage College in Rajasthan"

III. Evaluation & Results

1	Conduct of Internal Examinations	Class test and Pre-university was conducted.	85 %
2	Maintenance of Marks register /File	Timely completed	Nil
3	Result of University Examinations (Last Exam)	77% students were passed in Session 2018-19	Nil

IV. Learning Resources

1	Library	One library partially Automated.
2	Labs	32
3	e-Class Rooms	17
4	Computer & Internet	550

V. Physical Activities

Indore Games - Chess, Table Tennis , Carom, Outdoor Games - Football, Badminton, Boxing, Volleyball, Kho-Kho, Marathon, Basketball, Badminton, Kabaddi	Yes
---	-----

📍 Kanti Chandra Road, Bani Park, Jaipur-302016 (Raj.) 🌐 Visit Us: www.ssgpareekpgcollege.com
☎ Tel. : 0141-2202167 ✉ Email : info@ssgpareekpgcollege.com

PRINCIPAL
S.S.G. PAREEK PG COLLEGE
JAIPUR (RAJASTHAN)



S.S.G. PAREEK P.G. COLLEGE



(Affiliated to the University of Rajasthan)

Est.-1906

UGC Approved "First Heritage College in Rajasthan"

VI. Basic Facilities		
1.	Sanitation	Yes
2.	Drinking water Facilities	Yes
3.	Meeting Room	Yes
4.	Seminar Hall	Yes
5.	Auditorium	Yes
6.	Lift	Yes

AUDIT COMMENT:

Institution should focus in research and raising funds facilities through various activities.

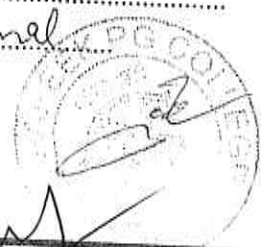
Dr. N. M. Sharma
PRINCIPAL Principal
S.S.G. PAREEK PG COLLEGE
JAIPUR (RAJASTHAN)

Effective teaching methodologies are should be improved.

Amrta
Co-Ordinator
IOAC, S.S.G. PAREEK PG College
Jaipur (Rajasthan)

Comprehensive analysis of college performance across various domains on the areas of strength and areas that require improvement.

Dr. Mahesh Bhinel
(HOD)



Kanti Chandra Road, Bani Park, Jaipur-302016 (Raj.) Visit Us: www.ssgpareekpgcollege.com
Tel.: 0141-2202167 Email: info@ssgporeekpgcollege.com

S.S.G. PAREEK PG COLLEGE
JAIPUR (RAJASTHAN)



Certificate of Registration

S.S.G. PAREEK P. G. COLLEGE

KANTI CHAND ROAD, BANIPARK, JAIPUR- 302016, INDIA

has been assessed and Certified by Otabu Certification Pvt. Ltd.
as meeting the requirements of:

ISO 9001:2015

Quality Management System

For the following scope of activities:

**PROVIDING EDUCATION FOR GRADUATE AND POST GRADUATE LEVEL FOR
VARIOUS STREAMS SUCH AS SCIENCE, ARTS, MUSIC, COMMERCE,
COMPUTER, MANAGEMENT**

Issue No : 01
Date of Certification: 02 March 2024
1st Surveillance Due: 01 March 2025

Revision No () : NA
2nd Surveillance Due: 01 March 2026
Recertification Due: 01 March 2027
(subject to the company maintaining its system to the
required standard)

PRINCIPAL
PAREEK PG COLLEGE
JAIPUR (RAJASTHAN)

Certificate No:- 0302Q210924

To Verify this Certificate please visit at www.otabucert.com



Dr. Anita Gupta
(Managing Director)

*Validity of the certificate is subject to successful completion of surveillance audit on or before due date (in case surveillance audit is not allowed to be conducted, this certificate shall be suspended/withdrawal). *This Certificate of Registration remains the Property of Otabu Certification Pvt. Ltd. and shall be returned immediately upon request.

Otabu Certification Pvt. Ltd., RZ-9 (Ground Floor), Prem Nagar, Ullam Nagar, New Delhi-110059 (India)

Email:- info@otabucert.com website:-www.otabucert.com



Certificate of Registration

S.S.G. PAREEK P. G. COLLEGE

KANTI CHAND ROAD, BANIPARK, JAIPUR- 302016, INDIA

has been assessed and Certified by Otabu Certification Pvt. Ltd.
as meeting the requirements of:

ISO 14001:2015

Environmental Management System

For the following scope of activities:

**PROVIDING EDUCATION FOR GRADUATE AND POST GRADUATE LEVEL FOR
VARIOUS STREAMS SUCH AS SCIENCE, ARTS, MUSIC, COMMERCE,
COMPUTER, MANAGEMENT**

Issue No : 01
Date of Certification: 02 March 2024
1st Surveillance Due: 01 March 2025

Revision No () : NA
2nd Surveillance Due: 01 March 2026
Recertification Due: 01 March 2027
(subject to the company maintaining its system to the
required standard)

PRINCIPAL

S.S.G. PAREEK PG COLLEGE
JAIPUR (RAJASTHAN)

Certificate No:- 0302E211024
To Verify this Certificate please visit at www.otabucert.com



Dr. Anita Gupta
(Managing Director)

*Validity of the certificate is subject to successful completion of surveillance audit on or before due date (in case surveillance audit is not allowed to be conducted, this certificate shall be suspended/withdrawal). *This Certificate of Registration remains the Property of Otabu Certification Pvt. Ltd. and shall be returned immediately upon request.

Otabu Certification Pvt. Ltd., RZ-9 (Ground Floor), Prem Nagar, Uttam Nagar, New Delhi-110059 (India)

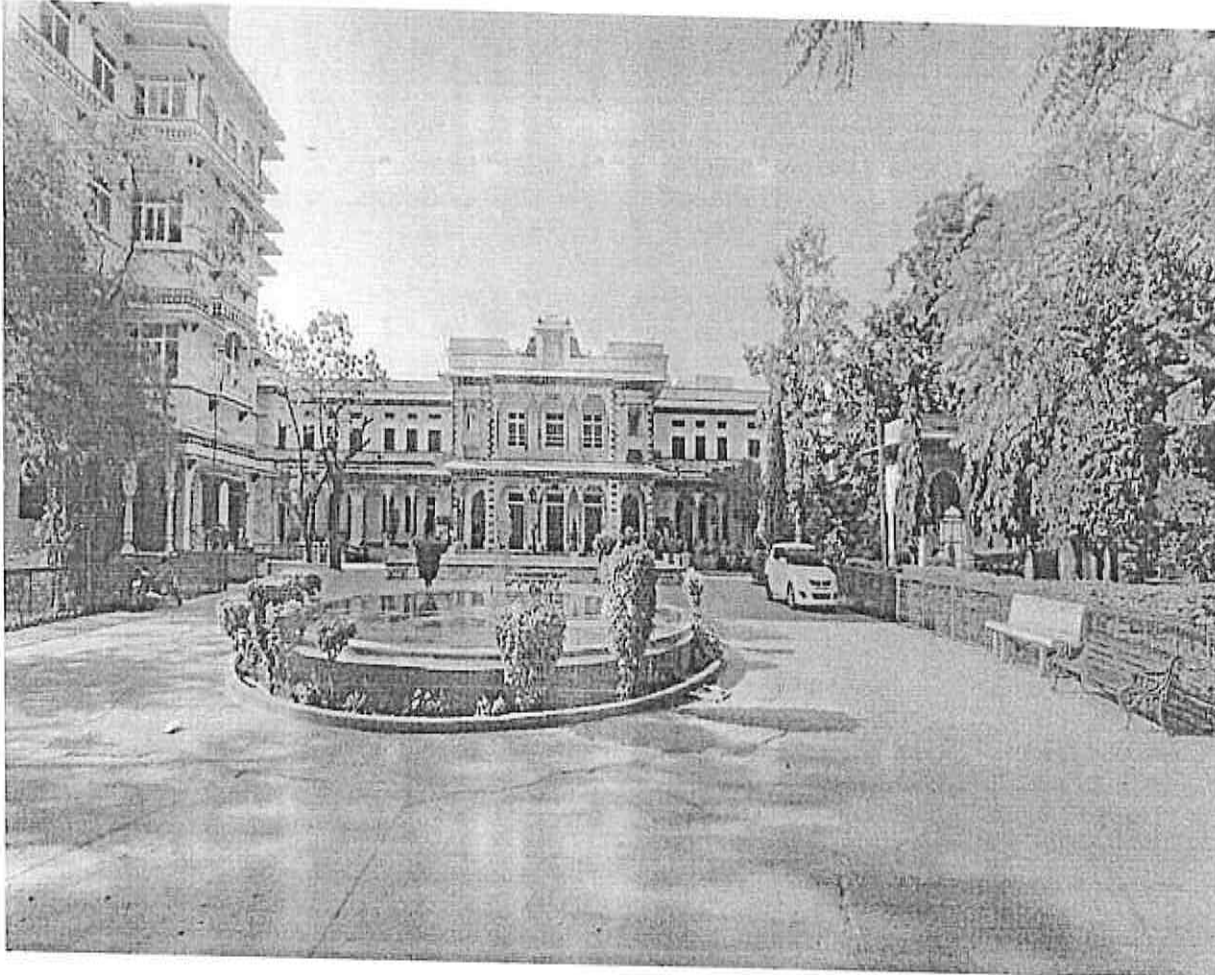
Email:- info@otabucert.com website:-www.otabucert.com



**GREENDASH ENVIRONMENTAL
SOLUTIONS PVT. LTD.**

**GREEN AUDIT REPORT
S S G Pareek P G College**

GREEN AUDIT REPORT S S G Pareek P G College



Carried out by
Greendash Environmental Solutions Private Limited
5A/3, Ratan Nagar, Teen Dukan,
Dehar Ka Balaji, Jaipur- 302039
Mobile- 8003097697
E Mail: greendashindia@gmail.com
www.greendashindia.com



PRINCIPAL
S.S.G. PAREEK PG COLLEGE
JAIPUR (RAJASTHAN)



Table of Contents:

Sl No.	Content	Page No.
1.0	Acknowledgement	3
2.0	Introduction	4
3.0	Green Audit	8
3.1	Use of Natural Resource	8
3.2	Green Environment	10
3.3	Water Management	11
3.4	Wastewater Management	11
3.5	Power Management	12
3.6	Paper Usage Management	14
3.7	Solid Waste Management	14
3.8	Rain Water Harvesting	15
3.9	Green Initiative	15
4.0	Recommendations	16


PRINCIPAL
S.S.G. PAREEK PG COLLEGE
JAI PUR (RAJASTHAN)



1.0 Acknowledgment:

Greendash Environmental Solutions Pvt Ltd places on record its thanks to S S G Pareek P G College for entrusting the task of conducting green audit study.

Greendash team would like to thank the whole team of S S G Pareek P G College, for supporting and supplying us with the necessary data for conducting the Green Audit.

We would also like to thank following faculty members for their continuous support and guidance, without which the completion of the project will not be possible.

- | | |
|---------------------------|-----------------|
| ➤ Dr (Prof.) N.M. Sharma, | Principal |
| ➤ Dr Anju Pareek, | Vice Principal |
| ➤ Dr Ramesh Swami | Asst. Professor |

Last but not the least, we would like to thank all the staff who is directly or indirectly involved in our study.

Thank You,

Greendash Environmental Solutions Pvt Ltd., Jaipur

Date:- 29/02/2024


PRINCIPAL
S.S.G. PAREEK PG COLLEGE
JAIPUR (RAJASTHAN)



2.0 Introduction:

The green audit aims to analyze environmental practices within and outside the college campuses, which will have an impact on the eco-friendly atmosphere. Green audit can be defined as systematic identification, quantification, recording, reporting and analysis of components of environment.

Green audit is a valuable means for a college to determine how and where they are using the most energy or water or other resources; the College can then consider how to implement changes to optimize the consumption.

For taking any optimizing initiative, first step is measurement and analysis of the present consumption.

Thus it is imperative that the College evaluate its own contributions toward a sustainable future.

The role of higher educational institutions in relation to environmental sustainability is more prevalent.

The rapid urbanization and economic development at local, regional and global level has led to several environmental and ecological crises. On this background it becomes essential to adopt the system of the Green Campus for the institutes which will lead for sustainable development and at the same time reduce a sizable amount of Green House Gas emissions from the environment.

PRINCIPAL
S.S.G. PAREEK PG COLLEGE
JAIPUR (RAJASTHAN)



College Introduction:

The school of the Tiwari brothers was coming out with flying Colors and 07. December 1924 on the auspicious occasion of the 19 Awards Ceremony of the Sanskrit School the proposal for up Gradation for this School up to the High School level was the made in presence of the Chief Guest, then the Head of the Education Department for Jaipur State and to everyone's surprise and approval was received with in a short span of one and a half month. In 1925 this institution was registered as a High School with U.P. Education Board as the RBSC was not formed by then. From 1925-26 classes for the High School began. Later with the upcoming of Rajputana Education Board this High School was affiliated with it. Efficient management & dedication and devotion of the mentors attracted students from all walks of society and from every part of the country. Even the big new building proved to be small palace to operate. The nephew of Mr. Swaroop Lal ji Tiwari Mr. Govind Narayan ji Tiwari and Kanhaiya Lal ji took over the responsibility of constructing the current new building with the investment if lacs rupees. The foundation, of the current building was laid down on 12, June 1935 by the Finance Minister of Jaipur state Mr. Rao Bahadur Raja Amarnath Atal.

Several dedicated and skilled labourers worked daily to complete this building in four years. The official inauguration of this vast building was done on March the 10 th 1939 by the than Maharaja Shri Sawai Mansingh Ji. Soon the classes of Arts and Commerce were started and it became the first Private Inter Collage of Jaipur state. This collage was affiliated of Rajputana University, Jaipur in 1947. It was upgrade to Degree Collage on July the 01 st on 1955. In 1993 the collage became a Post Graduate Collage. Currently Post Graduate Classes on are going on in Hindi Language, History,

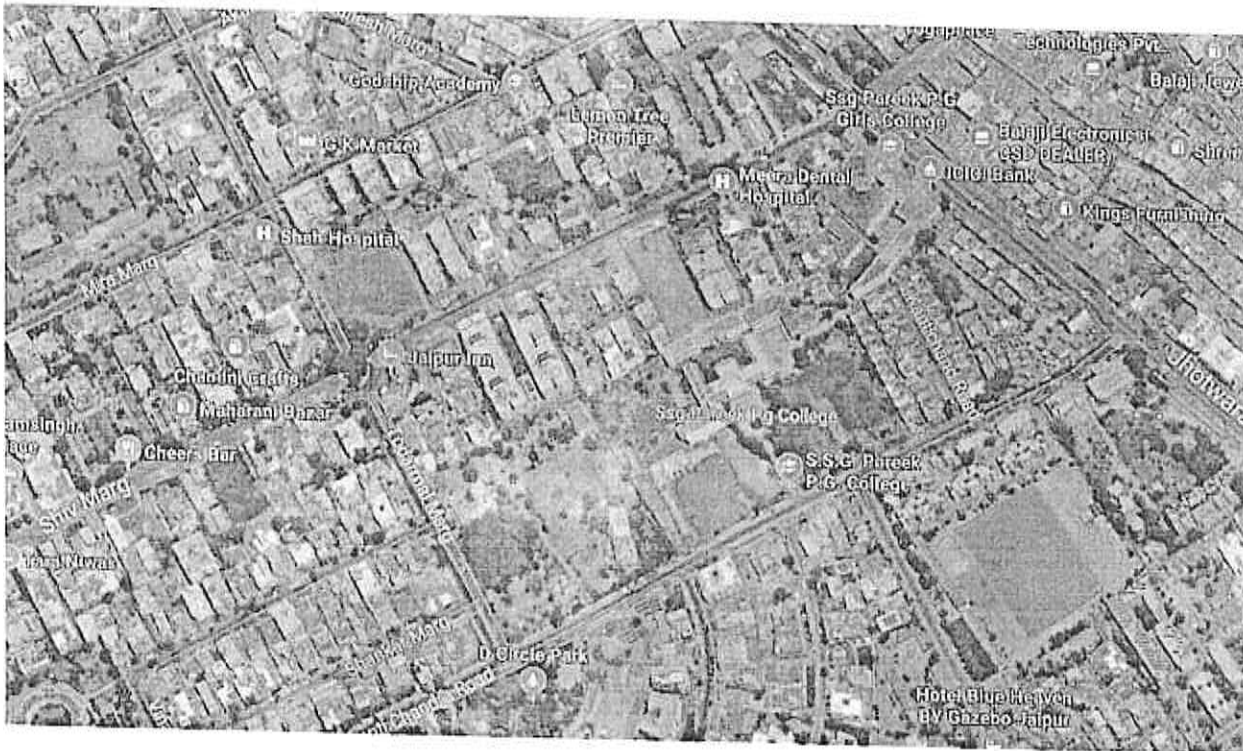
Political Science and Geography. S.S.G. Pareek Collage on the basis of its Education, Administration and Historical background and with a glorious past, bright present and golden future was declared a Heritage collage in 2001 by the University Grants Commission , New Delhi. It received a special grant of rupees seven lacks (7,00,000) along with aids for the development of library building and Post Graduation Department University Grants Commission has sanctioned and aid of 68.36 lacks under the eleventh five year plan has given an aid of 50 lacks rupees to the collage on the completion of its Hundred Golden Years.


PRINCIPAL
S.S.G. PAREEK PG COLLEGE
JAIPUR (RAJASTHAN)



College Location:

The land use around the college campus is mainly mix of Institutional and commercial area.



S S G Pareek P G College Campus google location

Location coordinates are 26.928543, 75.800978

**PRINCIPAL
S.S.G. PAREEK PG COLLEGE
JAIPUR (RAJASTHAN)**



The College has experienced, dedicated and highly qualified faculty state-of-art infrastructure and an environment conducive for learning, research and innovation.

At present staff and student strength is

- Total Faculty 105 (58 Female, 47 Male)
- Total Students 1932 (2023-2024 Batch)

Details of the infrastructure of College is as per below:

Plot Area -	32000.00 sq. meter
Constructed Area -	2776.27 sq. meter
Green Belt-	10509.5 sq. meter
Parking -	1298.76 sq. meter
Pathway -	1422.06 sq. meter

During Audit, Greendash team interacted/ associated with following college staff team members:

Sl.	Name	Designation	Contact
1.	Dr (Prof.) N. M. Sharma	Principal	+91-9928082956
2.	Dr Anju Pareek	Vice Principal	+91-9829557095
3.	Dr Ramesh Swami	Asst. Professor	+91-9079083383


PRINCIPAL
S.S.G. PAREEK PG COLLEGE
JAIPUR (RAJASTHAN)



3.0 Green Audit:

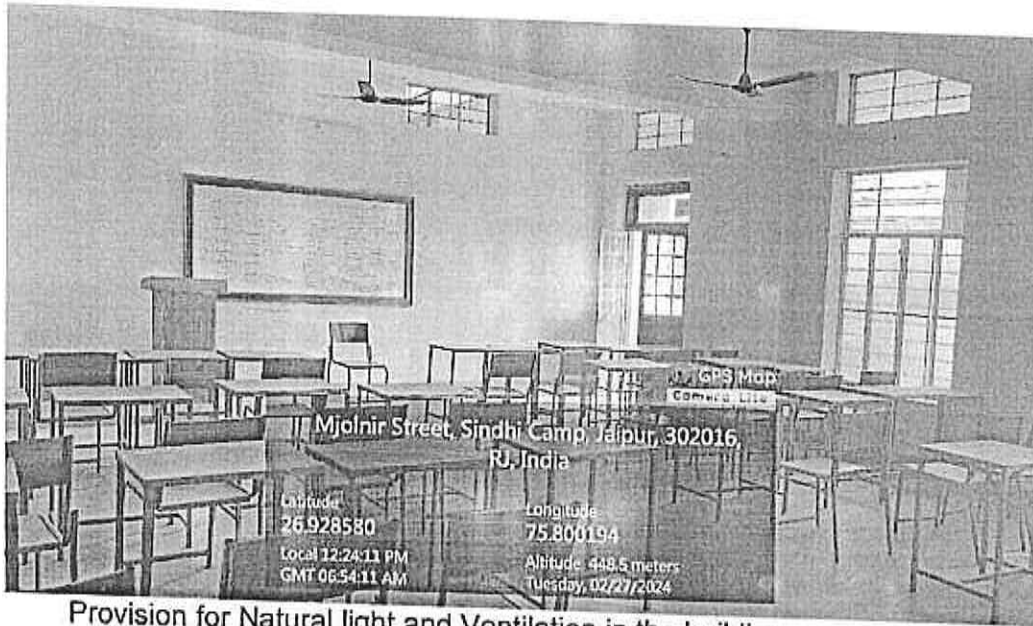
For Green Audit following 9 major areas were covered and compliance/initiatives under these areas were verified /validated.

1. Use of Natural Resources (Ventilation & Day Light)
2. Green Environment
3. Water Management
4. Waste water Management
5. Power Management
6. Paper Waste Management
7. Solid Waste Management
8. Rain Water Harvesting
9. Green Programs(Green initiatives)

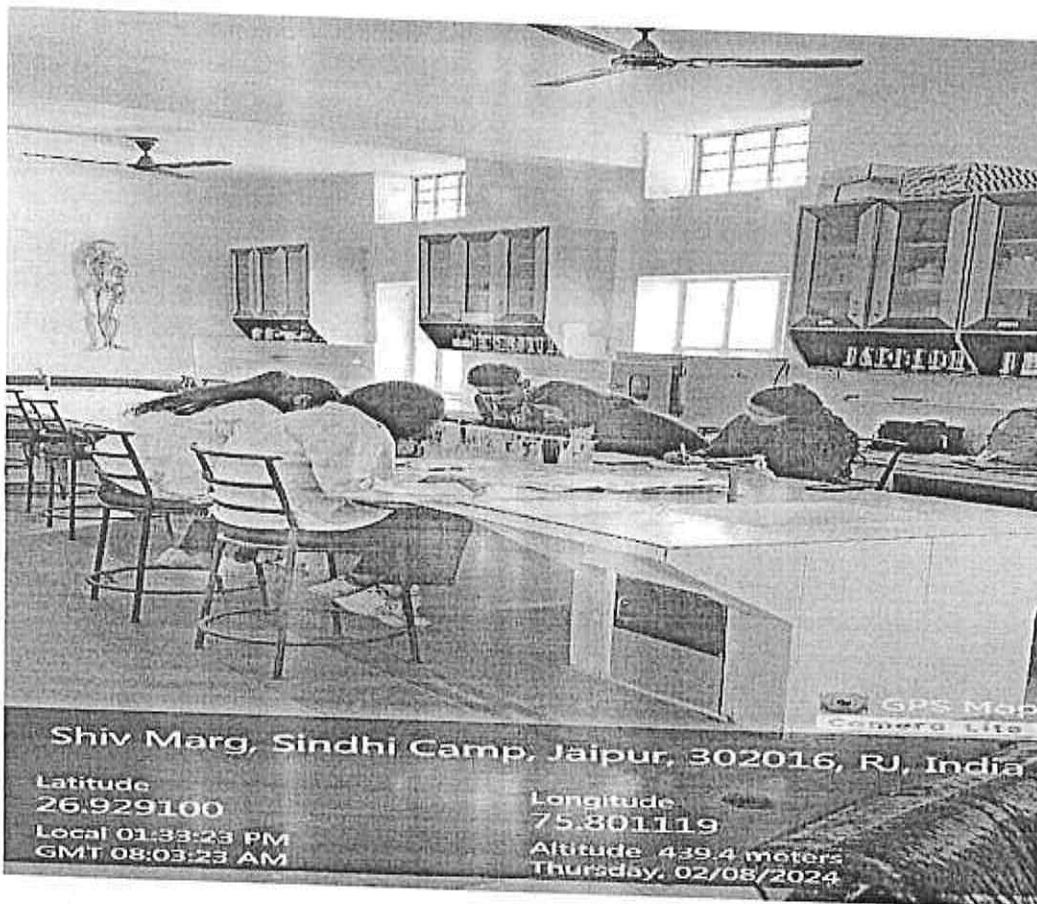
3.1 Use of Natural Resources (Ventilation & Day Light)

- College Buildings are designed and constructed with taking care of Natural Ventilation and lighting on priority.
- Corridors are wide and good ceiling height is also taken for proper ventilation. Most of the corridors receive good daylight.
- Classrooms, Labs and Library have large windows. Windows are kept open for adequate day light.
- On the other side Curtains are also provided to avoid the reflection and distraction to the students.
- Classrooms are designed in a way to provide easy and safe exit during any emergency as well as provides good ventilation and sunlight also.

PRINCIPAL
S.S.G. PAREEK PG COLLEGE
JAIPUR (RAJASTHAN)



Provision for Natural light and Ventilation in the building



Provision for Natural light and Ventilation in the rooms

**PRINCIPAL
S.S.G. PAREEK PG COLLEGE
JAIPUR (RAJASTHAN)**



3.2 Green Environment:

College has planted total 175 trees and several plants inside the campus with the involvement of Teachers, Students, Visitors in the campus for increasing the green Quotient as well as awareness among the students about the importance of trees in one's life.

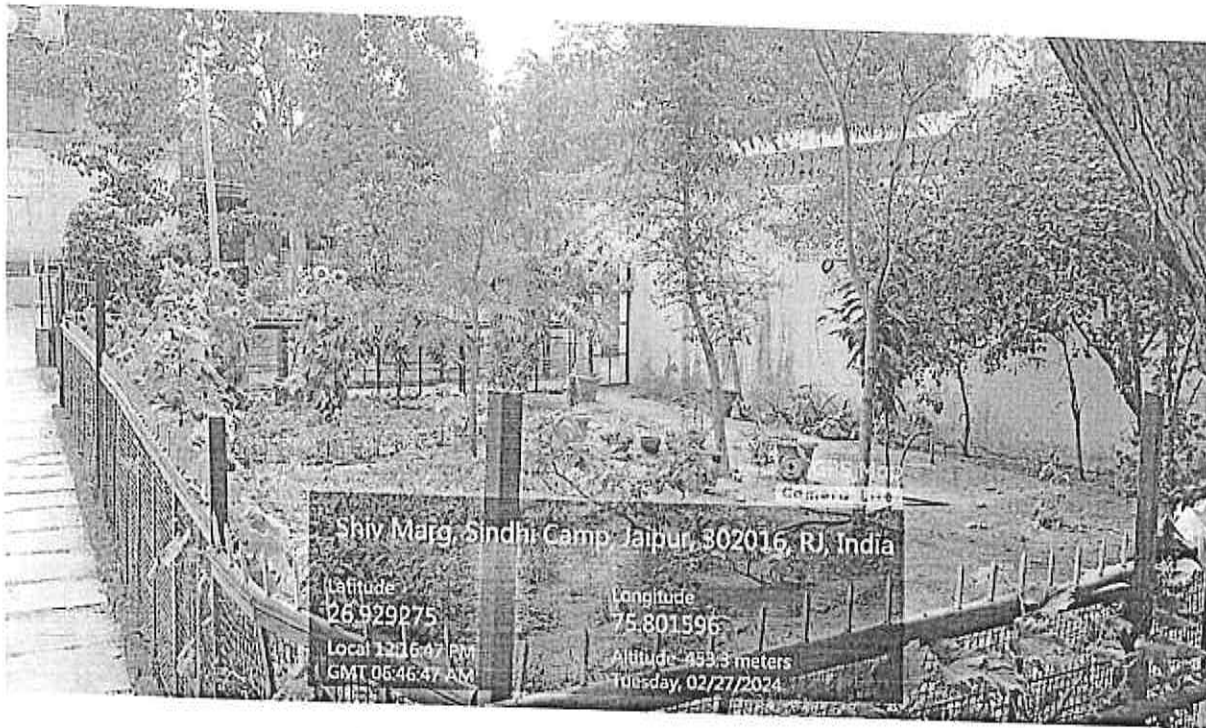


Figure 3- Lush Green College Campus

**PRINCIPAL
S.S.G. PAREEK PG COLLEGE
JAIPUR (RAJASTHAN)**



3.3 Water Management:

Source of fresh Water is Government supply and Bore wells inside the campus. Total 2 nos. of Government (PHED) connections and 2 nos. of borewells are available in the college campus. No water meters are provided on the borewells. It is suggested to install water meters to check the water consumption. Water meter of the government supply lines are also not working. Due to non availability of water meters no consumption is available with the college. Total 14000 Ltrs of water storage tanks (1000 Ltrs (10 Nos.) and 500 Ltrs (8 Nos.) are available on roof of the college buildings. Approximate water consumption is 35000 to 40000 Ltrs per day.

- The drinking water to all students, faculty and staff is provided through the Water Purifier at various points in college campus. For this government supply water is used.
- Storage tanks were constructed at various locations for storage of water for various purposes to avoid frequent running of pumping system to keep the water line under pressure.
- Normally mops are used for floor cleaning to avoid the water wastage during floor cleaning
- Water saving taps can be installed in the washrooms.
- Water conservation Signage can also be displayed in the water usage points to create awareness among users and increase water conservation.
- Sensor based Taps can also be Installed to eliminate the water wastage.
- Rain water recharge pit is also available in the campus. It is suggested to construct 2-3 more recharge structures in the campus to cover the complete campus.
- Regular maintenance is carried out by the college for all water pipes and taps.

3.4 Wastewater Management:

Sewage Treatment Plant (STP) of 350 KLD capacity is installed for treating the domestic waste water and treated water is used for horticulture purposes. Quality of treated Sewage water meets the Pollution control board norms and being checked regularly through internal lab as well as from outside approved laboratory.

PRINCIPAL
S.S.G. PAREEK PG COLLEGE
JAIPUR (RAJASTHAN)



3.5 Power Management:

Electricity:

Electricity is supplied by local electricity department. The major electricity consuming equipment installed in the campus are

- Windows and Split AC,
- Submersible Motor,
- Motors,
- Air Cooler,
- Water Coolers
- RO Plant,
- Desktop,
- Printer,
- Fan,
- Tube light,
- LED Bulb, etc.

The college has taken the following initiatives for energy conservation.

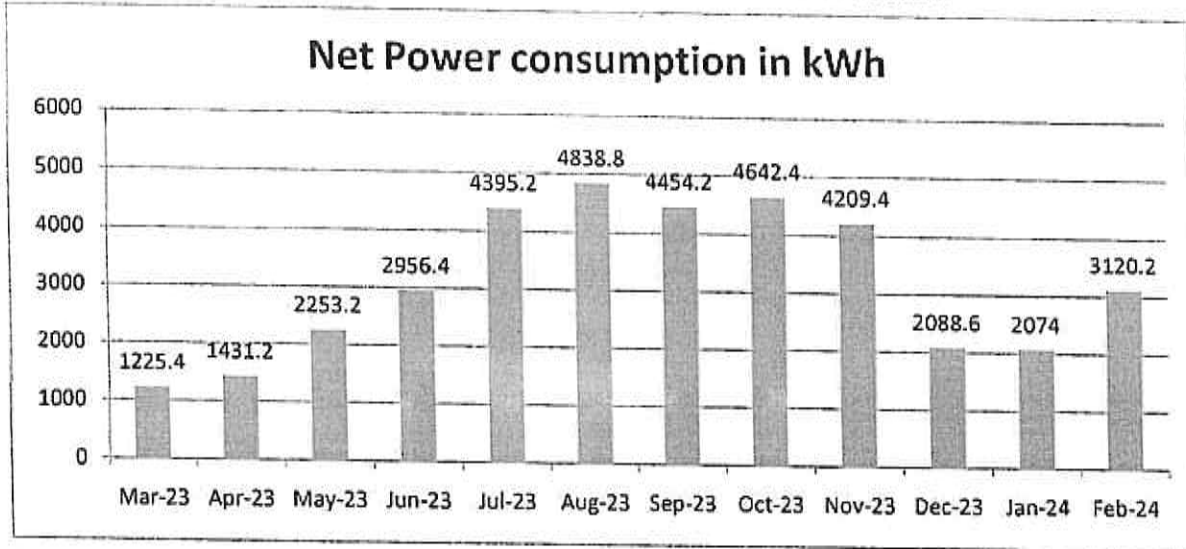
- In every classroom and LAB under the Electrical switch board the sticker are pasted to convey and appeal the students and faculty to Switch off the light and fans when they are not in use.
- Awareness program has been conducted on energy conservation.
- Use of energy efficient LED tube lights and bulbs are used in the campus
- The LED monitors are used in Computer Machines instead of CRT type monitors.
- Use of Uninterrupted Power only at unavoidable places such as Server Rooms, Sound and PPT presentations at Seminar Hall, Accounts section, Principal Office etc
- Automatic Start mode of DG set is kept in manual mode to avoid the frequent on-off during power cuts. Only emergency supply is given by UPS and DG. Auto-mode is started during examination and emergency.
- Use of Air conditioners are avoided expect few locations
- The pumps to lift the water in overhead tanks are in manual mode and timely uplifting the water as per the need of the campus.

PRINCIPAL
S.S.G. PAREEK PG COLLEGE
JAIPUR (RAJASTHAN)



- Every Class room and LAB are naturally illuminated because of the environment friendly architectural design of the building.

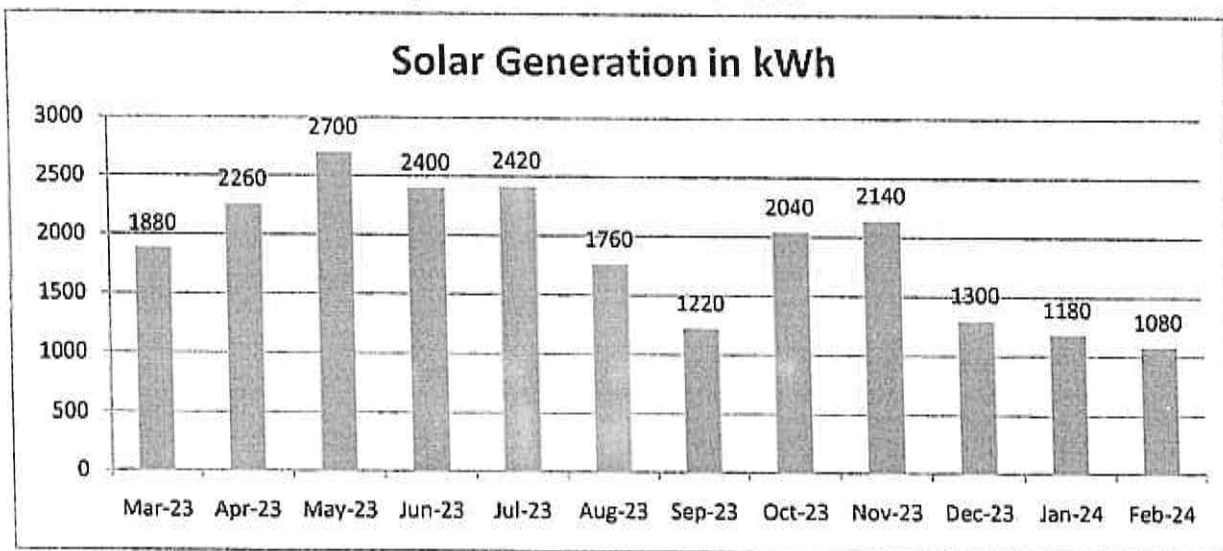
Energy consumption of the college for the 2023-2024 is as shown below.



Solar Power Plant:

College has installed two solar power plant of 19 kW capacity each for green power generation on the roofs of the buildings.

Power saving data is not available with the college. It is suggested to note down the generation data and track the generation to ensure proper working of the plant. During visit it is also observed that solar is not working at its full capacity. It is suggested to have regular maintenance / checking of the system to maintain healthiness.



**PRINCIPAL
S.S.G. PAREEK PG COLLEGE
JAIPUR (RAJASTHAN)**



Diesel Generator:

College has installed 1 DG set of 250 kw in the campus for catering the power supply needs during power cut. As power status is good so College rarely using the DG sets. DG sets are given on AMC also for better upkeep and maintaining the efficiency and effectiveness.

3.6 Paper Usage Management:

In an educational institute papers are used widely for any type of communication, record, documentation etc. leading it to generation of waste paper.

The College has taken many steps to optimize and avoid paper usage.

Following are the observations:

- Both side of paper is used for print out or photo copy.
- Most of the internal communications are done through digital mode.
- Innovative practices are followed by staff as Used papers are used for rough work, file marker, page separator etc.
- Old papers are given to vendor for recycling.
- The institute has ERP System, E-MIS system to perform most of administrative and Academic work in which reduction of paper usage like online working/approvals.
- College is carrying out following activities with ERP and E-MIS systems to reduce the paper usage:
 - Admission of the students
 - Students profile and I-Card Generation
 - Fee Collection through payment gateway
 - Exchange of information: department to office & vice versa

3.7 Solid Waste Management:

It was observed that:

- College maintains the waste collection facility in the campus for segregated waste collection.
- Outside Vendor is identified for collection of the waste from the College campus as per the defined frequency and will dispose as per the waste characteristic.
- Single use utensils are not promoted in the campus. Reusable utensils are encouraged widely and various sessions are being organized for the same.


PRINCIPAL
S.S.G. PAREEK PG COLLEGE
JAIPUR (RAJASTHAN)



3.8 Rain water Harvesting:

It was observed that:

- 1 Nos. of recharge well structure is constructed in the campus.
- It is suggested to ensure cleaning of the well.
- It is also suggested to construct 3 more number of recharge structures to cover the complete premises.

3.9 Green Initiatives:

In addition to the regular academics, there are several co-curricular and extra-curricular activities are conducted for the holistic development of student in College. Several value-added programs are conducted for technical growth of the students. Students undergo many co-curricular and extra-curricular activities like NSS camps, social and environmental cause events, International Yoga Day Celebration, Sports, Cultural Events, Induction Programmes, Farewell Programmes, Art workshops, Quizzes, Veteran's Visits, Celebrity Visits etc. Institute has e-bulletin published every month on institutional website to give information of these activities. Every Department has their own Students' Association through which, several programmes are organized every semester.

College is organizing various awareness campaigns to create awareness among students such as

- Environment Day
- Tree Plantation Drive
- Earth Day
- Single Use Plastic awareness
- Energy Conservation
- Green Environment Campaign
- Road Safety Week etc.

PRINCIPAL
S.S.G. PAREEK PG COLLEGE
JAIPUR (RAJASTHAN)



4.0 Recommendation:

4.1 For Improving Energy Efficiency:

- Central control switch / MCB can be installed in each classroom.
- Installation of automatic light switch sensors can be considered.
- Whenever new equipments are being procured, Life cycle assessment can be made for the equipment and based on those eco-friendly products can be preferred depending upon the usage.
- Energy consumption can be tracked on regular basis to identify the major energy consuming equipments / processes and consumption optimization can be planned upon them.
- The institute can install motion detection lighting mechanism in all the washrooms so that the washrooms lights are only used whenever there is need.

4.2 Water Conservation:

- Being Water a very critical resource in the coming near future, water plays a vital role in every one's life. As students will be our brand ambassadors for improving the water conservation habits among society. Awareness sessions for water conservation can be planned for the students.
- Minimize/ reduce water usage by installing water saving faucets.
- Waterless urinals can be considered to reduce water consumption in the washrooms.
- Water balance chart to be prepared to identify the major water consumption areas. Water meters to be installed at key areas. Based on the consumption data water consumption projects / initiatives can be taken.

PRINCIPAL
S.S.G. PAREEK PG COLLEGE
JAIPUR (RAJASTHAN)



**GREENDASH ENVIRONMENTAL
SOLUTIONS PVT. LTD.**

**GREEN AUDIT REPORT
S S G Pareek P G College**

Greendash Environmental Solutions Private Limited

Registered Office:

5 A/3, Ratan Nagar, Teen Dukan

Dehar Ka Balaji, Jaipur-302039

Phone No: 8003097697

Email: greendashindia@gmail.com

Website: www.greendashindia.com

DISCLAIMER

All information contained in this report is based on the data available and observations made during the audit.

All recommendations made in this audit report should be duly evaluated by the management before implementation.

No warranty, guarantee, or representation, either expressed or implied, is made as to the correctness or sufficiency of any representation contained herein. This report may not address every possible loss potential, violation of any laws, rules or regulations, or exception to good practices and procedures. The absence of comment, suggestion, or recommendation does not mean the property or operation(s) is in compliance with all applicable laws, rules, or regulations, is engaging in good practices and procedures, or is without loss potential.

No responsibility is assumed for the discovery and/or elimination of hazards that could cause accidents or damage at any facility that is subject to this report.

**PRINCIPAL
S.S.G. PAREEK PG COLLEGE
JAIPUR (RAJASTHAN)**